

# M 26

## SPRAY-EXTRACTION CLEANERS

Spray-extraction cleaner mounted on driving frame. Stainless steel container. The CEME version is equipped with a powerful pump of 60 W, spray rate 4,25 l/min, spray pressure 6 bar. The ULKA version is equipped with a powerful pump of 48 W, spray rate 1,1 l/min, spray pressure 7 bar. Pump thermo-protection. Separated pump control. Standard drain system. AUTO version (specific for automotive and carwash sector) is equipped only with hand nozzle and 6 m spray-ex hose Ø 40.



Floor spray-ex alu tool (optional)



Hand spray-ex tool



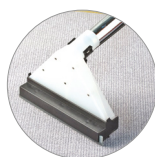
Quick connection



Drain system



Cleaning solution tank



Floor tool



Ideal for every type of textile surface

### PRODUCT IDENTIFICATION

TYPE	REF. NO.	PIECES/PALLET
M 26 I ULKA	19131210005	8
M 26 I CEME	19131212002	8
M 26 I Auto CEME	19131210191	8

### TECHNICAL DATA

Voltage - Frequency	220-240 V~	50/60 Hz
Max power rating	W	2300
Rated power (nominal power)	W	1900
Cleaning solution tank	l	12
Useful capacity for dirty water	l	56
Air flow rate	l/s	100
Vacuum	mbar	190
Noise level	db(A)	65
IP code		IPX4
Power supply cable	m	10
Weight (without accessories)	Kg	24,5
Dimensions	mm	610x540x920

### STANDARD ACCESSORIES

Ø 40

TYPE	REF. NO.
Flexible hose 3 m (*)	6493150
Flexible hose 6 m (**)	6493151
Hand spray-ex tool	7180074
Spray-ex floor tool with "S" tube (***)	6935730

### OPTIONAL ACCESSORIES

TYPE	REF. NO.
Floor spray-ex alu tool	7180089

(\*) Only for CEME version

(\*\*) Only for ULKA and Auto CEME versions

(\*\*\*) Only for ULKA and CEME versions