

# FR 30 D 50

## WALK BEHIND SCRUBBER DRYERS FR 30 SERIES - WITH TRACTION



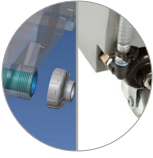
FR 30 represents something unique in the cleaning market. First of all the new design, which makes FR 30 a masterpiece of aesthetic and ergonomics. Then 30 liters of tank capacity, an high manoeuvrability and above all a complete set of integrated solutions make FR 30 suitable for any environment and surface: - Control panel with display: for an easy and fast selection of all the main functions; - "Silent mode" function: ideal for day cleaning and in all the environments (hospitals, schools, ..) where silence is strictly required; - Compact squeegee: large only 65 cm, and adjustable, for excellent drying results; - A complete set of filters (as well as the debris tray) to protect the main components and give to FR 30 the max reliability; - Performance: high speed (up to 4,5 km/h), high productivity, remarkable running time (2h and more), top cleaning results. FR 30 is now even more reliable and performing thanks to the new sensor TOUCH SYSTEM. FR 30 TOUCH can be moved and controlled only using a thumb: intuitive, user friendly and reliable. It is available in two versions: basic and full package (standard on board charger + batteries).



Touch System



"Silent mode" function



"Built in" solution tank filter



Adjustable squeegee



Compact squeegee



Debris tray + recovery tank filter



Tiltable recovery tank

### PRODUCT IDENTIFICATION

TYPE	REF. NO.	PIECES/PALLET
FR 30 D 50 TOUCH	10.4181.00	1
FR 30 D 50 BC TOUCH	13.4181.00	1

### TECHNICAL DATA

FEATURES			
Cleaning width	mm	500	
Squeegee width	mm	650	
Productivity (theoretical - practical)	m <sup>2</sup> /h	2250 - 1350	
Power supply		Battery 24V	
Installed power	W	1030	
Advancement		with traction	
IP code		IPX3	

BATTERIES			
Type	Gel battery set (2 pcs) 12V 76Ah (***)		
Running time	h - min	2 h	
Battery compartment dimensions x No	mm x No	340x340x240 X 1	

BRUSHES			
Pad diameter x No	mm - inch x No	255 - 10" x 2	
Motor rating x No	W x No	450 x 1	
Motor speed	rpm	200	
Down pressure - Contact pressure	Kg - g/cm <sup>2</sup>	20 - 30,3	

TRACTION			
Motor rating	W	180	
Driving speed	Km/h	4,5	
Hill climbing ability (full load)	%	2	

VACUUM			
Motor rating	W	400	
Vacuum	mbar - mmH <sub>2</sub> O	1189	
Airflow rating	l/s	28	
Noise level	dB(A)	64/58 *	

TANK			
Type	Double tank		
Cleaning solution tank	l	30	
Recovery tank	l	33	
Weight (empty/with batteries)	Kg	76 / 129	
Dimensions	mm	1100x570x1020	

### STANDARD ACCESSORIES

TYPE	REF. NO.
Solution tank filling hose	30.0024.00
10" Polypropylene brush ø 0.7 (**)	40.0010.00
On board charger 24V 9A (***)	22.0623.00
Gel battery set (2 pcs) 12V 76Ah (***)	18.0000.00
Detachable brush deck splash guard (without bristles)	24.0264.00
Brush deck splash guard bristles	40.4006.00
Front + rear natural rubber blades	96.0159.00
Extra weight for squeegee (1x700 g) (****)	96.0171.00

### OPTIONAL ACCESSORIES

TYPE	REF. NO.
10" Polypropylene brush ø 0.9	40.0110.00
10" Tynex brush ø 0.9 grit 80	40.0510.00
10" Tynex brush ø 1.2 grit 80	40.0210.00
Pad holder 250 mm (for 10" pad)	40.1110.00
Set front + rear polyurethane squeegee blades	96.0011.00

(\*) Silent mode function

(\*\*) 2 Brushes on standard equipment

(\*\*\*) For BC version

(\*\*\*\*) You can use maximum one weight