

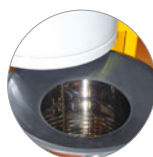
# AS 40 KS/M/H

## INDUSTRIAL DRY VACUUM CLEANERS - SINGLE PHASE

Vacuum cleaner with 3 motors. The filtering system is made of a polyester filter + cartridge filter. Manual filter shaking system. Removable dry container for maximum reliability. AS 40 KS is available in M and H filtration class.



Clogged filter pressure gauge



Conveyor in the tank



Vacuum cleaner with 3 motors



Manual filter shaking system



Practical basket holder for accessories



Detachable stainless steel container



Intake Ø 90 (AS 40 KS)



Intake Ø 50 (AS 40 KS M/H)

### PRODUCT IDENTIFICATION

TYPE	REF. NO.	PIECES/PALLET
AS 40 KS	18961210993	1
AS 40 KS M	18961210994	1
AS 40 KS H	18961210995	1

### TECHNICAL DATA

Voltage - Frequency	220-240 V~	50/60 Hz
Max power rating	W	3450
Rated power (nominal power)	W	2900
Container capacity	l	60
Useful capacity	l	40
Filtering surface	m <sup>2</sup>	0,5
Filtering surface (cartridge filter)	m <sup>2</sup>	1,06 (*) - 2,10 (**) - 4,20 (***)
Air flow rate	l/s	150
Vacuum	mbar	205
Sound level	db(A)	66,5
IP code	IPX4	(*) (**)
Power supply cable	m	10
Weight (without accessories)	Kg	51
Dimensions	mm	765x560x1400

### STANDARD ACCESSORIES

TYPE	REF. NO.	Ø 50
Flexible hose 3 m (*)	6010712	
Flexible hose 3 m (**)	6010711	
Curved extension tube ø 50	2511700	
Adjustable dry brush 0,40 m	6010052	
Round brush	2511720	
Crevice tool	2511730	
Cartridge filter (filtering surface 1,06 m <sup>2</sup> ) (*)	2512743	
Cartridge filter (filtering surface 2,10 m <sup>2</sup> ) (**)	2512076	
Cartridge filter CLASS HEPA/H (filtering surface 4,20 m <sup>2</sup> ) (***)	2512078	
Textile filter for manual filter shaking system	6895510	
Connection ø 50	2511710	
Manual filter shaking system	---	

### OPTIONAL ACCESSORIES

TYPE	REF. NO.
Adjustable dry brush 0,50 m	6010062
Stainless steel dry and wet/dry thickener separator	1897006
Paper filter bag with cap l 19 x 10 (**)	6830030

(\*) For AS 40 KS

(\*\*) For AS 40 KS M version

(\*\*\*) For AS 40 KS H version

